

WELCOME TO RAI BROTHERS

(the complete building solutions)



Company Profile

About Company

- We wish to introduce ourselves as one of the supplier of profiled metal roofing sheets with a variety of variants to suit the ever expanding needs of the clients, and well acclaimed integrated providers of Fabrication of Pre Fabricated Building and Erection of Pre Engineered Building systems.
- Ever since its inception in the year 2013, we have completed countless ventures in the metal roofing sector and also have many prestigious Pre Engineered Building (PEB)erection projects accomplished to the complete satisfaction of our clients, spread across the vast expanse of our country.
-

Purpose of the Company

Purpose :- To be a leader in the construction industry by providing enhanced services, relationship and profitability.

Vision :- To provide a quality service that exceeds the expectations of our esteemed customers.

Mission :- To build long term relationship and trust with our customers and clients and provide complete satisfaction for a variety of high skill and quality demanding works.

Core Values :- We believe in treating our customers with respect and faith. We grow through quality service and time commitments. We integrate honesty, integrity and business ethics into all aspects of our business functioning.

Our Goals

Goals :- Regional expansion in the field of construction and develop a strong base of key customers.

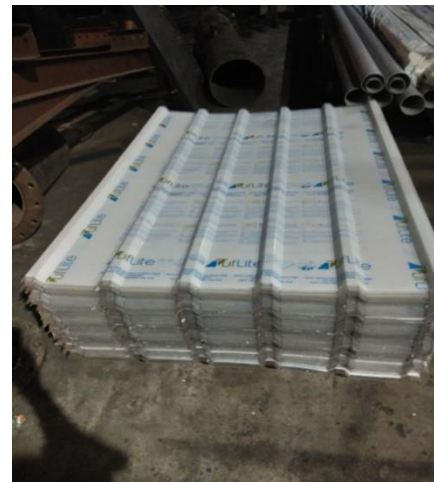
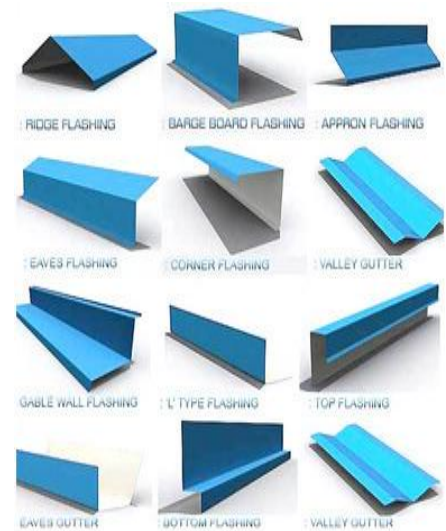
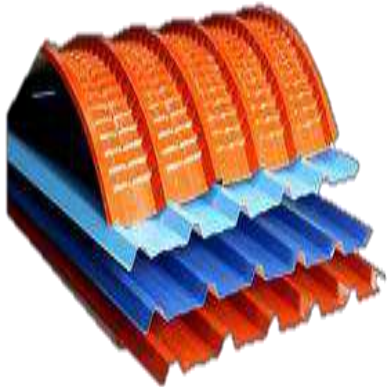
- Increase the assets and investments of the company to support the development of services.
- To build good reputation in the field of construction and become a key player in the industry.

What We Offer

We are the leading suppliers of comprehensive assortment of Roofing material.

- **Roofing Sheet (PPGI & PPGL and BGL/Tiles Profile)**
- **Decking Sheets**
- **GI & MS C&Z Purlin**
- **Building Accessories (Flashing/Corner /Plain Ridge/Gable Flashing /Gutter etc.)**
- **Roof Ventilator with PC base Plate/FRP Base Plate 21 & 24 Dia**
- **Polycarbonate Sheets 1.5 to 3.0 mm thick**
- **FRP Sheets**
- **Industrial Louvers**
- **Puff Sheets**
- **UPVC Sheets**

Our Products



Our Speciality

- Installation of Roof Sheets
- Installation of Deck Sheets
- Erection of Pre-Engineered Building
- Painting of Structures and Pipes
- Fabrication and Erection of MS Structure



Our Speciality

- Fabrication & Erection of Piping
- Fabrication & Erection of Equipment & C
- Site Fabricated Equipment.
- Steam Piping – IBR, Non IBR.
- Man Power Supply – Skilled / Un
- Plant Shifting work.
- Shut down jobs.



Health & Safety Policy

- Safety and Accident Prevention is our aim.
- Each employee is expected to follow all company rules to perform their work in a safe manner.
- It is our policy that our safety rules shall be strictly observed at all times.
- We all strive for a record of zero accidents.
- We conduct medical check-up (pre-employment and regular post-employment) as per the rules through the Factory Medical Officer and take important measures as per requirement.
- We provide all the required tools & safety appliances necessary to perform the work.

EQUIPMENTS

- WELDING MACHINE - 600/400/250 AMP
- CUTTING SET - 20 NOS.
- GRINDER MACHINE - 22 NOS.
- DRILL MACHINE - 13 NOS
- SCREW MACHINE - 09 NOS
- ELECTRIC CABLE 2/3/4 CORE -2200 MTR
- EMCV BOARD - 07 NOS
- NYLON ROPE 10/12/16/18/20/22 MM-3200 MTR
- CHAIN CUPI 2/4/6/8/12 TON - 7 NOS
- WIRE ROPE 4/6/8 MM - 1000 MTR
- TURN BUCKLE - 42 NOS
- CHEKSO MACHINE - 10NOS.
- HYDRA MACHINE - 12 TON -1 NOS.
- PUG MACHINE - 4 NOS
- HAMMERING MACHINE - 12 NOS.
- STUD MACHINE FOR DECK SHEETS - 01 NOS.

Manpower Resources

Our present Manpower strength is as follows.

- **Engineers.** :4 NOS
- **Project Co-ordinators** : 2 NOS
- **Supervisor / Foreman** : 5 NOS
- **Skilled workman** : 25 NOS
- **Semi-skilled workman** : 30 NOS
- **Unskilled workman** : 15 NOS
- **Office staff** : 3 NOS
- **In addition above, we muster additional manpower at a short notice, whenever required.**

Quality Policy

- Securing targeted opportunities through preferred methods of procurement.
- The development and retention of people.
- ✓ This policy and its aims are communicated and understood Company as necessary and are reviewed to ensure continually.



Our Client

➤ SAJJAN INDIA LTD.



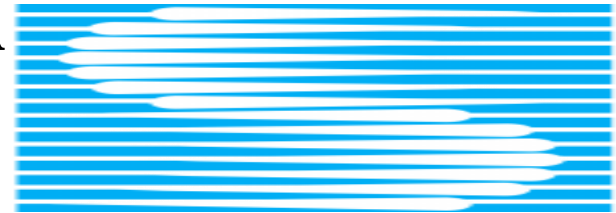
➤ FILATEX INDIA LTD. DAHEJ



➤ VYLIN GLASS LTD. JHAGADIA

➤ GUJARAT BOROSIL LTD. JHAGADIA

➤ SUPERTECH (INDIA) PVT LTD.



Our Client

- NEW FAB ENGINEERING PVT. LTD. VALSAD
- CHEMI ORGANICS PVT. LTD.
- CLATRON CLAY PVT.LTD JHGADIA
- DEVASHISH INFRASTRUCTURE, VADODARA



Our client

- **URVASHI PAPER MILL ANKLESHWAR**



**URVASHI PULP &
PAPER MILLS PVT. LTD.**

- **SHAPPORJI PALLONJI CONSTRUCTI**



- **ASIAN PAINTS LTD GIDC ANKLESHWAR**



- **COVESTRO (INDIA) PVT. LTD. GIDC ANKLESHWAR**

Our client

- **MEGHMANI INDUSTRIES LTD. – SEZ 1 DAHEJ**
- **INCO COLOURS (INDIA) PVT. LTD. GIDC ANKLESHWAR**
- **UNIVERSAL CORP CARE ,PANOLI**
- **GULBRANDSEN CHEMICALS PVT. LTD., JHAGDIA**
- **ELANTAS BACK INDIA, ANKLESHWAR**
- **ISAGRO ASIA AGOCHEMICALS PVT. LTD. ,PANOLI**
- **HIKAL LIMITED, PANOLI**
- **PI INDUSTRIES LTD. PANOLI**
- **WELKNOWN POLYSTER PVT.LTD.**



**MEGHMANI
GROUP**



INCO



Our client

➤ VITTHAL CASTROL JHAGADIA

➤ MEGHMANI DYES AND INTERMEDIATES LLP
GIDC VATVA AHMEDABAD

➤ MEGHMANI NOVOTECH INDIA PVT. LTD.
DAHEJ

➤ SILOXANE INDUSTRIES VALSAD

➤ SULPHUR MILLS LTD. PANOLI



**MEGHMANI
GROUP**



Sulphur mills limited

Technology Leader in Advance Formulations



PRODUCTS USED IN OVER
85 COUNTRIES WORLD WIDE

Our Projects

- L & T – Mundra
- Urvashi Paper Mills - Ankleshwar
- Sajjan India Limited - Ankleshwar
- Vylene Glass Limited - Jhagadia
- Gujarat Borosil Limited – Jhagadia
- Vitthal Polyols Pvt. Ltd.- Jhgadia
- Steel Peckers – Panoli
- Agro Chem – Panoli
- Annie Chemie – Dahej
- Achemechem GIDC Panoli
- Vidhata Pandesara



COMPLETED PROJECT

SR.N O	PROJECT NAME	CLIENT NAME	VALUE	AREA	PO NO.	YEAR
1.	DURGA POLYSTER (KADODRA)	DARON ENGINEERING	1,500000	5000 (SQMTR)	005	2015- 2016
2.	TIMETECHNO PLAST (PANOLI)	DARON ENGINEERING	1,500000	6000 (SQMTR)	10	2015- 2016
3.	FILATERS INDIA LTD.(DAHEJ)	DARON ENGINEERING	2,700000	13000 (SQMTR)		2015- 2016
4.	UPL-5 (SURAT)	STRUETEN PRE FOB	48,0000	2000 (SQMTR)		2015- 2016

COMPLETED PROJECT

SR.NO	PROJECT NAME	CLIENT NAME	VALUE	AREA	PO.NO.	YEAR
5.	SUBHLAKHMI POLYSTER (DAHEJ)	STRUETEN PRE FAB	700000	3500.00 (SQMTR) (PEB)	00011	2015-2016
6.	UPL LIMITED (JHAGADIA)	STRUCTEN PRE FAB PVT LTD	1,053686	3681.00 (SQMTR) (PEB)	00015	2016-2017
7.	VIDHATA CREATION	MAX TRU ENGINEERS	224,720	800 (SQMTR) (PEB)	00018	2015-2017
8.	UPL – 01 ANKLESHWAR	DEVASHISH INFRASTRUCTU RE	416000	1300.00 (SQMTR) (PEB)		2018-2019

COMPLETED PROJECT

SR.NO	PROJECT NAME	CLIENT NAME	VALUE	AREA	PO.N O.	YEAR
8.	PANAMA INDUSTRIES ANKLESHWAR	STRUCTEN PRE FAB PVT. LTD.	660000	3000 SQM		2018-19
9.	FLUIDLINE VALVE INTERNATIONAL VATVA	NEW FAB ENGINEERS	225000	900 SQM. (PEB)		2018-19
10 .	ESSAR – HAZIRA	STRUCTEN PRE FAB	396000	1800 SQM(PEB)		2019-20
11.	ASIAN PAINTS LTD.	ASIAN PAINTS LTD.	992100	3200SQM (ROOF SHEET)		2020-21
12.	INCO COLOURS P. LTD.	INCO COLOURS P. LTD.	2500000	CIVIL & FABRCATION		2020-21

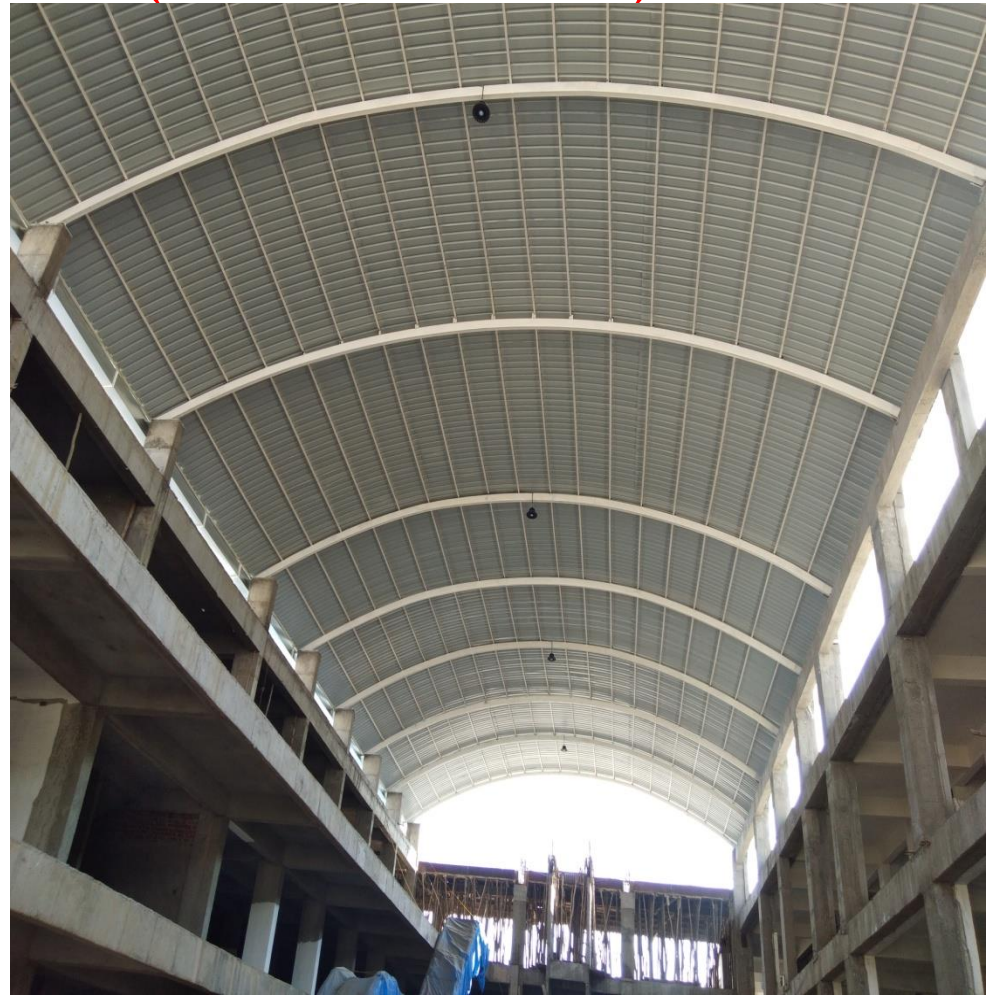
COMPLETED PROJECT

- **ESSAR LTD (STRUCTEN PRE FAB) – FERRY TERMINAL HAZIRA**
- **ERECTION & INSTALLATION OF PRE ENGINEERED BUILDING**



COMPLETED PROJECT

- GANESH INFRASTRUCTURE – GIDC ANKLESHWAR
- FABRICATION & ERECTION OF PFB (WITH MATERIAL)



COMPLETED PROJECT

➤ **POLYCEHM INDUSTRIES – GIDC VILAYAT (WITH MTERIAL)**



COMPLETED PROJECT

- **BSA CONTAINER – DAHEJ . C/O SUPERTECH (INDIA) PVT. LTD.**
- **ERECTION OF PRE ENGINEERED BUILDING**



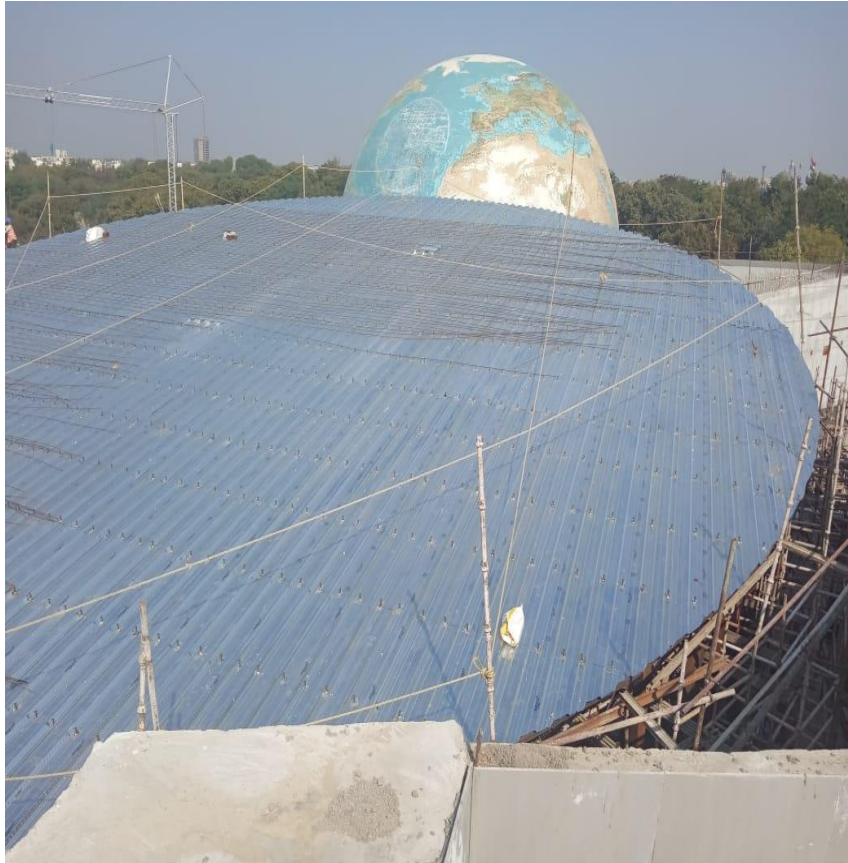
COMPLETED PROJECT

➤ **SULPHUR MILLS LTD. - GIDC PANOLI C/O DEVASHISH INFRASRUCTURE P. LTD. ERECTION OF PEB**



COMPLETED PROJECT

➤ **SHAPOORJI PALLONJI AND COMPANY PVT. LTD. - SCIENCE CITY AHMEDABAD - FOR INSTALLATION OF DECK SHEETS**



REDMI NOTE 5 PRO
MI DUAL CAMERA

COMPLETED PROJECT

➤ INTELICHEM PVT. LTD. Dahej



COMPLETED PROJECT

- **Siloxane Industries Pvt. Ltd. – Valsad**
- **Installation of Deck Sheets with Material**



COMPLETED PROJECT



COMPLETED PROJECT

- **INCO COLOURS (INDIA) PVT. LTD. . – GIDC ANKLESHWAR**
- (CIVIL & FABRICATION WORK)



COMPLETED PROJECT

- **SHRI AMBICA HARDWARE & SANITARY. . – GIDC ANKLESHWAR**
- (FABRICAION & ERECTION AND INSTALLATION ROOF WORK -



COMPLETED PROJECT

- **HIKAL LTD. (RAVI CONSTRUCTION) – GIDC PANOLI**
- **INSTALLATION OF DECK SHEETS WITH MATERIAL)**



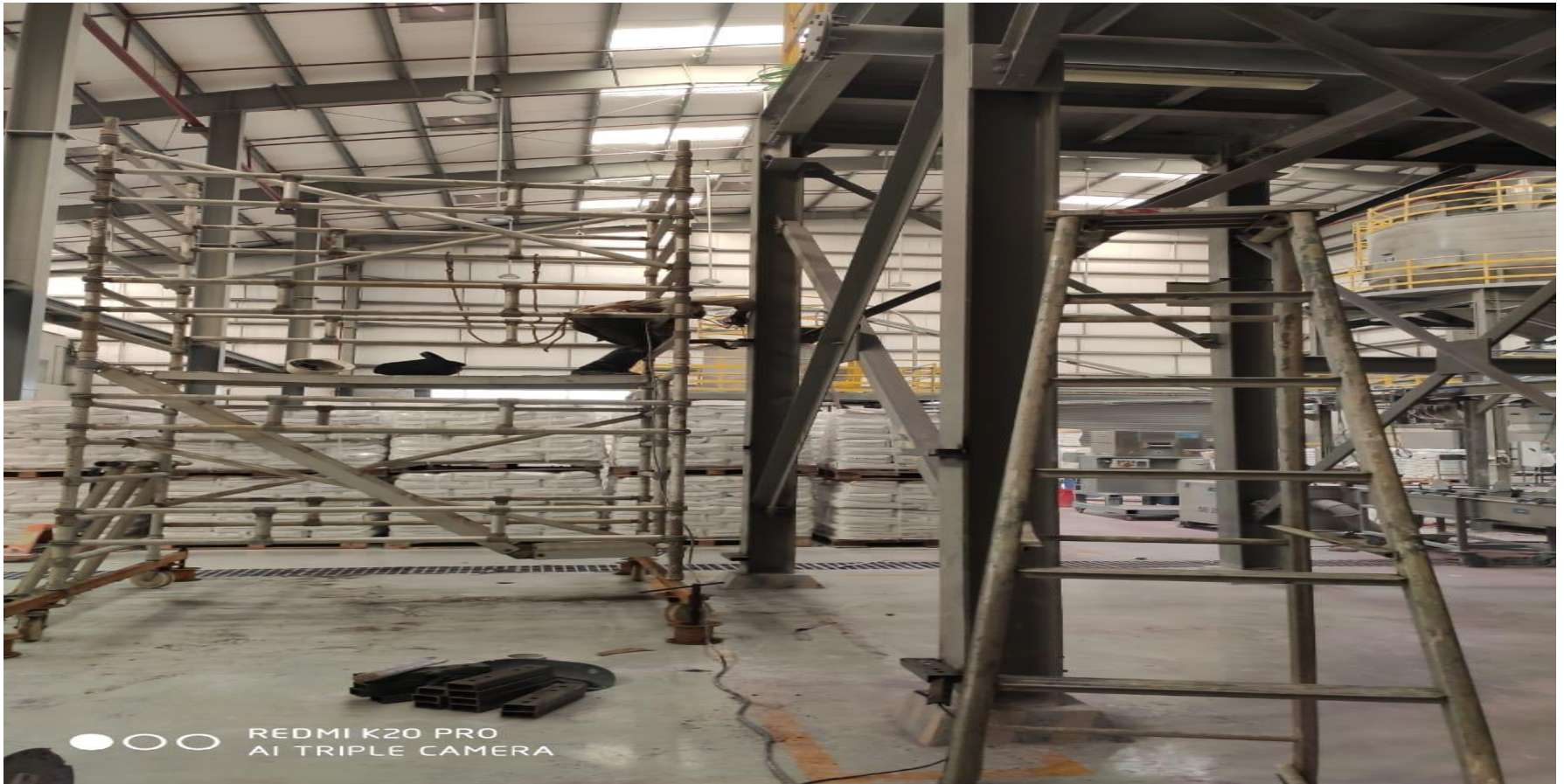
COMPLETED PROJECT

- **TAGROS CHEMICALS INDIA PVT. LTD. – GIDC PANOLI C/O (SSP PVT. LTD)**
- **FABRICATION & ERECTION AND INSTALLATION OF LOUVERS & ROOF SHEETS WITH MATERIAL)**



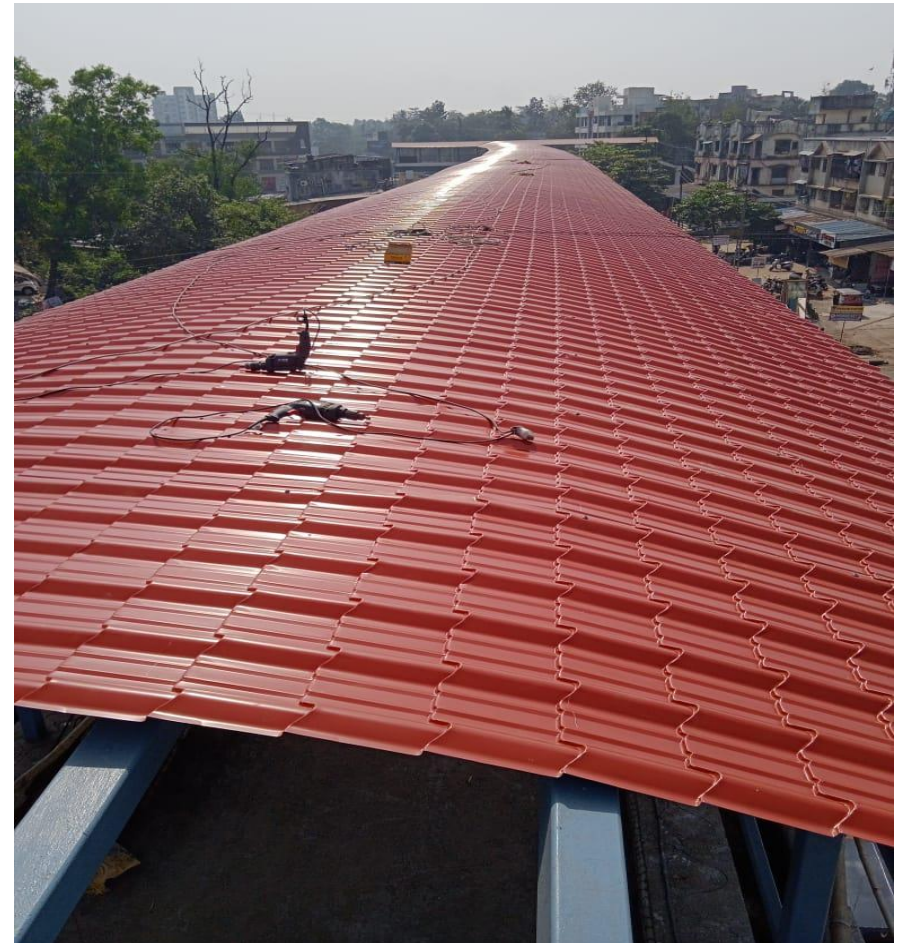
COMPLETED PROJECT

- **ACCENT MICRCELL PVT. LTD.- SEZ - I DAHEJ**
- **FABRICATION & ERECTION OF MS STRUCTURE)**



COMPLETED PROJECT

- **J K PROJECTS PVT. LTD. – SKYWALK BRIDGE SILVASA D & NH**
- **INSTALLATION OF TILES PROFILE ROOF SHEETS**



COMPLETED PROJECT



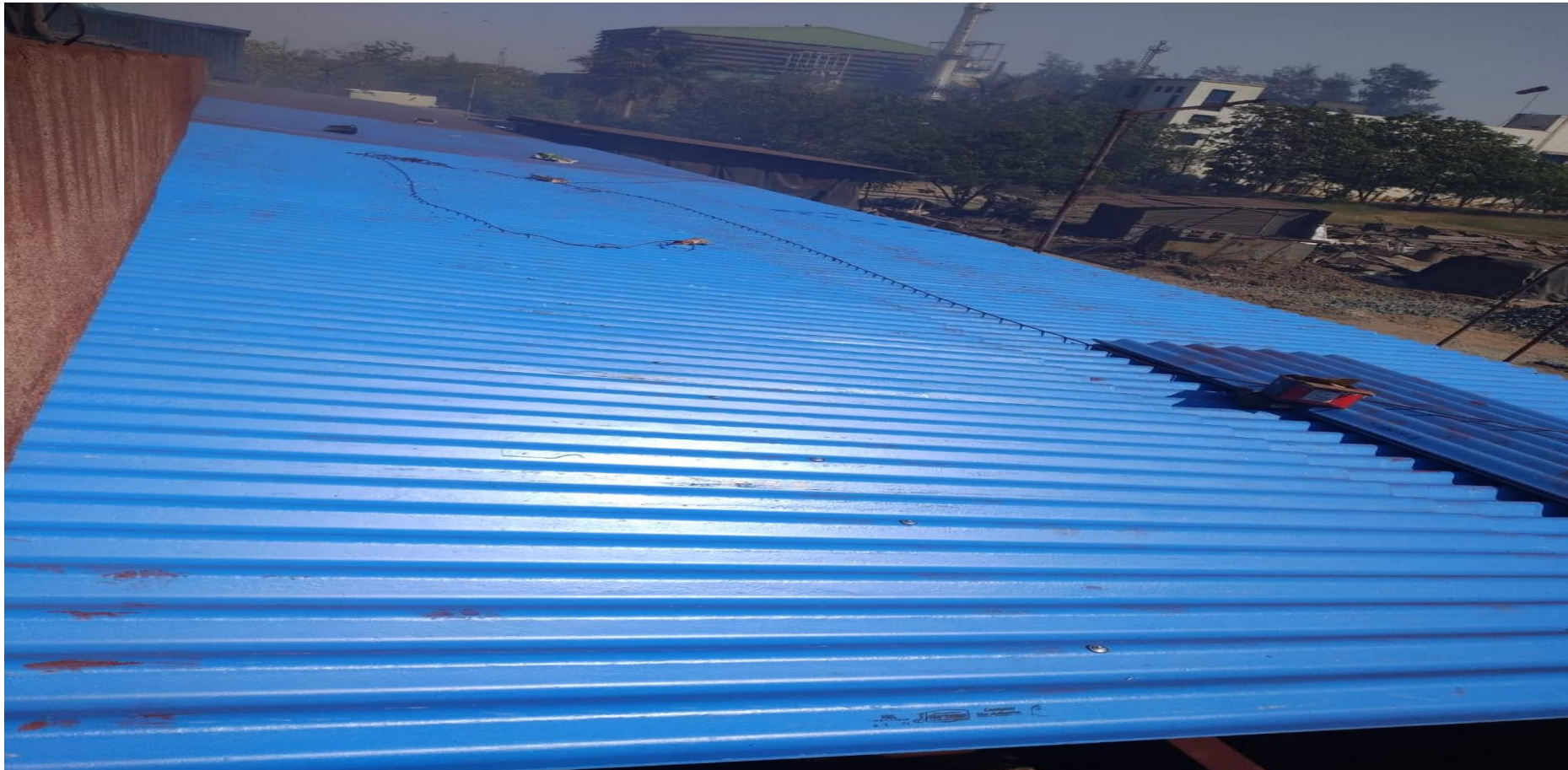
WhatsApp Video 2021-01-12 at 16.20.16.mp4

- **J K PROJECTS PVT. LTD. – SKYWALK BRIDGE SILVASA D & NH**
- **INSTALLATION OF TILES PROFILE ROOF SHEETS)**



COMPLETED PROJECT

- **INCO COLOURS PVT. LTD. . – GIDC ANKLESHWAR**
- **INSTALLATION OF NON ASBESTOS CEMENT SHEETS**



COMPLETED PROJECT

- **SHELL ENERGY PVT. LTD. - HAZIRA SURAT**
- C/O NIYATI ENGINEERING PVT. LTD.



COMPLETED PROJECT

- **ARTI INDUSTRIES LTD. – GIDC JHAGADIA (CAPITAL CONSTRUCTION PVT. LTD.)**
- **INSTALALTION OF DECK SHEETS WITH SHEAR STUD (STUD MACHINE)**



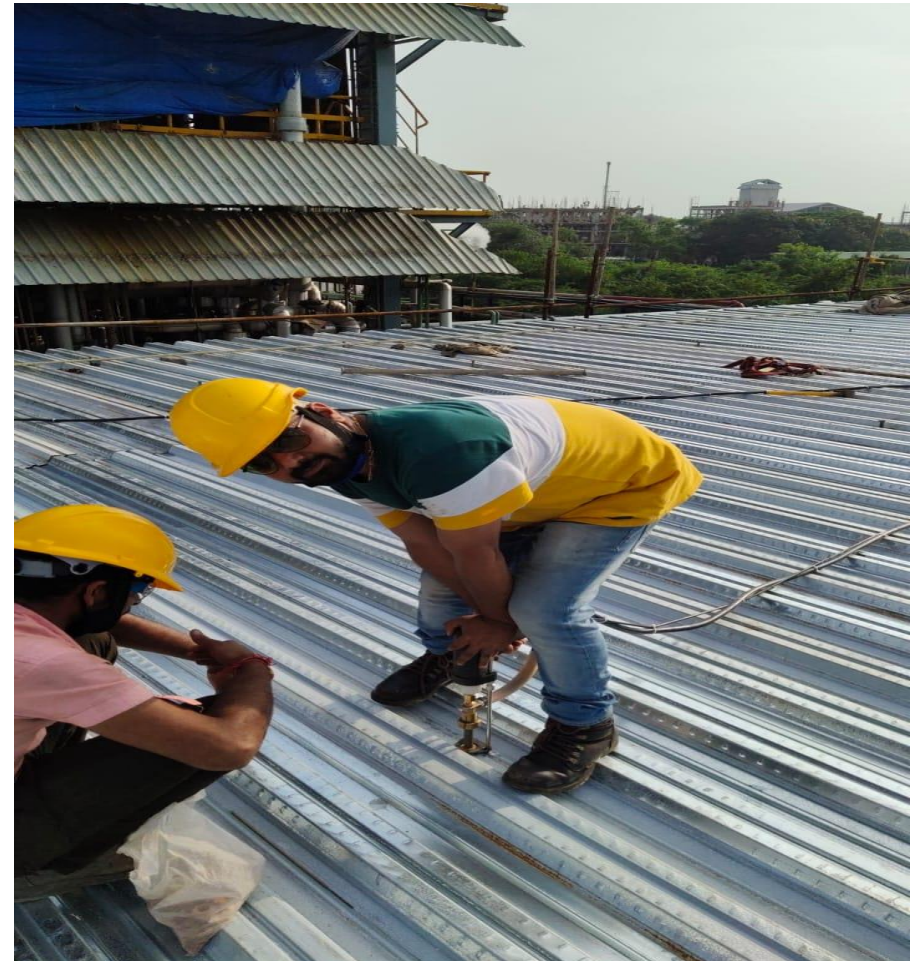
COMPLETED PROJECT

- **MEGHMANI INDUSTRIES LTD. – GIDC DAHEJ Area 4500 Sqm.**
- **INSTALALTION OF ROOF SHEETS WITH MATERIAL**



COMPLETED PROJECT

- **PI INDUSTRIES LTD. – GIDC PANOLI Area – 1000 Sqm**
- **INSTALALTION OF DECK SHEETS WITH STTUD MACHINE**



COMPLETED PROJECT

- **Gujarat Enviro-Protection And Infrastructure Pvt. Ltd. . Alang – Bhavnagar**
- **Project with Material**



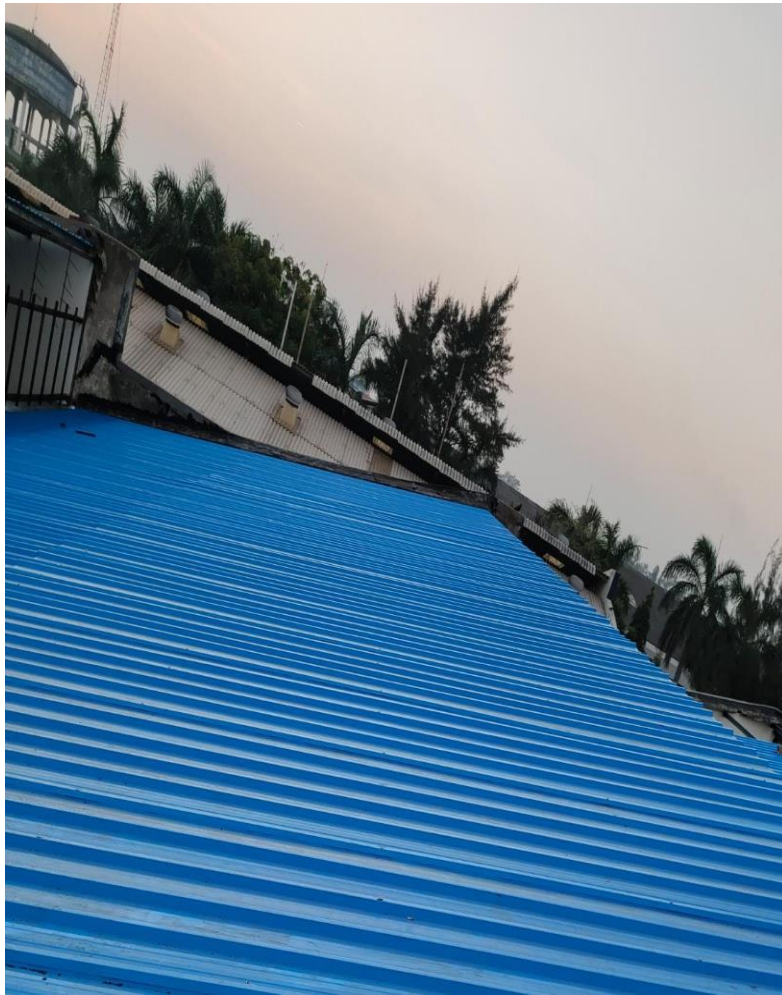
ON GOING PROJECT

- **CLAIRVOYANCE INDUSTRIES PVT. LTD. – GIDC DAHEJ**
- INSTALALTION OF PPGL SHEETS Area – 5200 Sqm.
- INSTALLATION OF NON ASBESTOS SHEETS – 5500 SQM.



ON GOING PROJECT

- **DORMOR TOOLS INDIA PVT. LTD. (RAMCO INDUSTRIES LTD.) – GIDC ANKLESHWAR**
SUPPLY & APPLY OF ROOF SHEETS - Area – 7500 Sqm.



ON GOING PROJECT

- **DORMOR TOOLS INDIA PVT. LTD. (RAMCO INDUSTRIES LTD.) – GIDC ANKLESHWAR**
False Ceiling - Area – 1250 Sqm.



ON GOING PROJECT

- **COROMANDEL INTERNATIONAL LTD.- GIDC ANKLESHWAR**
- SUPPLY & APPLY OF ROOF SHEETS – 1200 Sqm.
- INSTALLATION OF DECK SHEETS WITH SHEAR STUD - Area – 800 Sqm.



ON GOING PROJECT

- **COLOURTEX INDIA LTD. – GIDC Surat Area – 1200 Sqm**
- **INSTALALTION OF DECK SHEETS WITH STTUD MACHINE**



ON GOING PROJECT

- **ANKLESHWAR INDUSTRIES ASSOCIATION – GIDC Ankleshwar**
- Fabrication & Erection and Installation with material



Thank you

